

FIRE HOSE REEL & ACCESSORIES

ZFH172

Automatic Swing Fire Hose Reel

ZERO FIRE Automatic swing hose reels are simpler to use, and more effective than the conventional manual hose reels.

The automatic valve will be fully opened when the hose reel drum is rotated between one and half to four revolutions, ensuring immediate water flow at the nozzle. It will be fully closed when rewound.

It is used for all commercial and industrial buildings where fast response to extinguish fire are needed.



FEATURES

- Convenient
- Save precious time during emergencies
- Automatic Swing
- No more leakage due to unclosed valve

Design & Manufactured to BS EN694 : 2014

Working pressure : 12 bar

Tested pressure : 24 bar

Burst pressure : 42 bar

SPECIFICATIONS

Drum : Galvanised mild steel

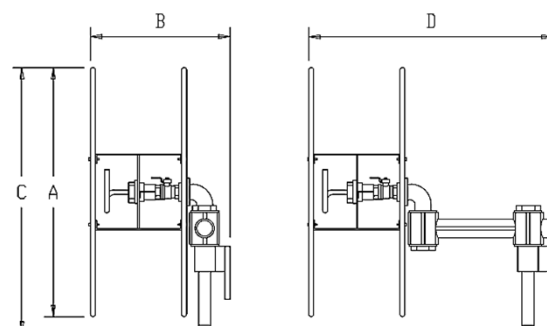
Water way : Light Alloy

Automatic Valves : Brass Chrome Plated

Finishing : Red epoxy polyester Electric powder coating

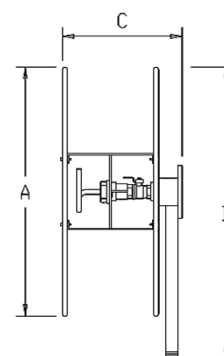
AUTOMATIC HOSE REEL – DOUBLE SWING TYPE

Model	Drum Capacity	A	B	C	D
ZFH172A-019	ø3/4" x 30m EN694 Hose	550	305	586	535
ZFH172A-025	ø1" x 30m EN694 Hose	550	305	586	535



AUTOMATIC HOSE REEL – FIXED TYPE

Model	Drum Capacity	A	B	C
ZFH172A-S-019	ø3/4" x 30m EN694 Hose	550	645	575
ZFH172A-S-025	ø1" x 30m EN694 Hose	550	645	575



Due to constant improvement in our products, we reserved the right to modify or withdraw any product or service without prior notice.



Designed : October 2003

Cert No: 2001-1-0321

SS ISO 9001 : 2001