

FIRE HOSE REEL & ACCESSORIES

ZFH25A

Automatic Swing Fire Hose Reel

ZERO FIRE Automatic swing hose reels are simpler to use, and more effective than the conventional manual hose reels.

The automatic valve will be fully opened when the hose reel drum is rotated between one and half to four revolutions, ensuring immediate water flow at the nozzle. It will be fully closed when rewound.

It is used for all commercial and industrial buildings where fast response to extinguish fire are needed.



FEATURES

- Convenient
- Save precious time during emergencies
- Automatic Swing
- No more leakage due to unclosed valve

Design & Manufactured to BS EN671-1 : 2001

Working pressure : 15 bar

Tested pressure : 30 bar

Burst pressure : 50 bar

SPECIFICATIONS

Drum : Galvanised mild steel

Water way : Light Alloy

Automatic Valves : Brass Chrome Plated

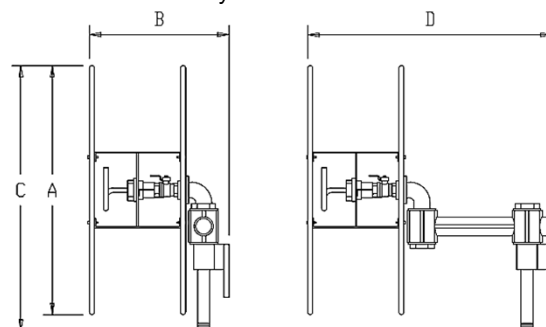
Finishing : Red epoxy polyester Electric powder coating

Thickness : 1.2 mm.

Hose : Polyester braided

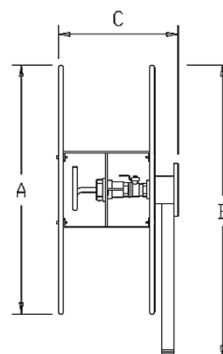
AUTOMATIC HOSE REEL – DOUBLE SWING TYPE

| Model | Drum Capacity | A | B | C | D |
|------------|---------------------------|-----|-----|-----|-----|
| ZFH25A-019 | ø3/4" x 30m EN694 Hose | 550 | 305 | 586 | 535 |
| ZFH25A-025 | ø1" x 30m EN694 Hose | 550 | 305 | 586 | 535 |



AUTOMATIC HOSE REEL – FIXED TYPE

| Model | Drum Capacity | A | B | C |
|--------------|---------------------------|-----|-----|-----|
| ZFH25A-S-019 | ø3/4" x 30m EN694 Hose | 550 | 645 | 575 |
| ZFH25A-S-025 | ø1" x 30m EN694 Hose | 550 | 645 | 575 |



Due to constant improvement in our products, we reserved the right to modify or withdraw any product or service without prior notice.



Designed : October 2003

Cert No: 2001-1-0321
SS ISO 9001 : 2001